

waspe



ANNUAL REVIEW APRIL 2014 - MARCH 2015





CONTENTS

Welcome – Andrew Burrell, Chair	2
Introduction – Audrey Carlin, Senior Executive Director for Business Development	3
Wasps Impact in 2014-15	4
Awards	6
New Projects	7
Demand Assessment	10
Creative Projects	19
Financial Review	23
Contributors and Supporters	24
Where We Are	Back cover

Photography:

Michael Wolchover / Lighthouse Photographics / Dapple Photography / Colin Hattersley



WELCOME – ANDREW BURRELL CHAIR

Welcome to our Annual Review. 2014/15 was a year of transition and change for Wasps. Most notably at the end of the review period, we appointed two new executive directors to take our emerging programme forward and to enhance the operational capacity of our growing organisation.

We were delighted to be nationally recognised for our social enterprise model – providing affordable studio space for our creative community - while working hard 'behind the scenes' to update the governance of the organisation so that it continues to meet the evolving work of the group of companies.

Wasps represents three entities: The Wasps Trust, Wasps Ltd and Wasps Creative Industries CIC. This year the companies became formally linked and this led to a new role of Chair of the Wasps' Group, which I was delighted to take on in autumn 2014.

On behalf of the Board, we thank and note our gratitude to the former Chairs of Wasps Ltd, Steve Inch, and of The Wasps Trust, Ian Wall, for all their hard work and dedication over many years.

We also, thank our former Chief Executive, David Cook, who after 23 years, moved on to pastures new in December 2014. His drive and commitment over the years has enabled Wasps to achieve so much. We wish him every success in the future.

While there has been changes within Wasps, some things remain the same. Artists continue to find themselves in difficult economic circumstances despite the major contribution they make to Scottish culture. In our previous review, we noted that our survey of Wasps' tenants found that 60% earn less than £5,000 and 90% earn less than £10,000 each year from their art. The statistics haven't changed in a decade and the need to provide studios which offer artists the opportunity to share ideas and potentially to collaborate on projects at a minimal rent is as strong as ever.

I am constantly aware of the significant cultural impact of artists based in our properties. Much of the work that populates our galleries and arts venues is created in Wasps' studios.

With lots to report from the last year, I hope you enjoy reading this review. ▲





INTRODUCTION – AUDREY CARLIN, SENIOR EXECUTIVE DIRECTOR FOR BUSINESS DEVELOPMENT

I joined the Wasps team towards the end of the 2014-15 review period and have felt excited and encouraged by the successes that the Wasps Team has achieved over recent years.

Wasps is a multi-award winning cultural social enterprise, one of the largest organisations of its type in Europe which supports almost 1,000 artists and other creative people day in, day out, at 17 urban, rural and island sites across Scotland.

Having raised £22m in capital funding, Wasps now owns most of its properties, with nearly £6m of assets, and is entirely self-sufficient, no longer needing public revenue grant funding.

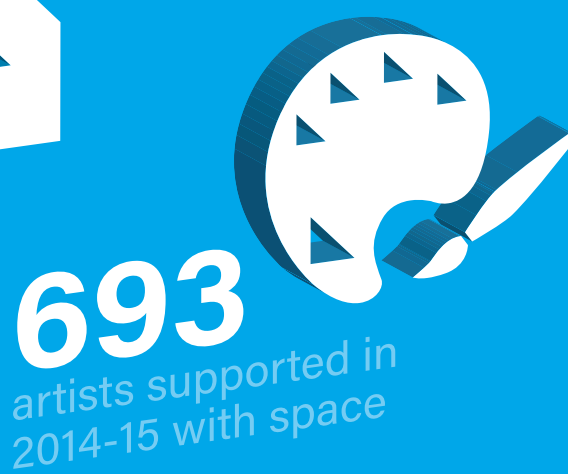
The company is now on a very solid financial footing and yet more developments are in the pipeline to bring our service to even more artists across the country.

The needs and practices of the creative people that we support continues to change and diversify. We have been partnering with other bodies to assess demand for creative space in parts of Scotland where we do not currently operate.

As a result of this demand assessment, we completed our first studio project in the Scottish Highlands in March 2015.

Over the coming year I look forward to getting to know many of the creative people that this organisation supports, to consolidating the company and its core activities while looking to the future in exciting new projects like the Briggait Creation Centre, which will be the UK's largest collaborative facility for dance, performance, circus and visual arts. ▲

WASPS IMPACT IN 2014-15





£22m
raised to date



£140k

spend on property repairs
(up 46% on 2013/14)

96
exhibitions and
events hosted



23,129

attenders at our
events and exhibitions



3,450

visits to our annual Wasps
Open Studios event

£12k

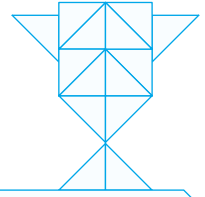


generated in sales and commissions for artist
tenants via the 2014 edition of Wasps Open Studios



32

artists hosted in our residency facilities
from England and Wales, Switzerland,
Germany, Sri-Lanka, Jamaica, Estonia,
Australia and the United States



AWARDS

GLASGOW BUSINESS AWARDS – BEST PERFORMING SOCIAL ENTERPRISE AWARD

We were delighted to win the best performing Social Enterprise at the Glasgow Business Awards in September 2014. This award was created to highlight the impact that social enterprises have in the economy and in the communities they serve.

This award named Wasps as the most outstanding social enterprise in Glasgow, demonstrating innovation, imagination and successful trading commercially.

We were judged on our social, economic and environmental impact, our creativity and our leadership and management within the sector. ▲

SOCIAL ENTERPRISE SCOTLAND – SCOTTISH SOCIAL ENTERPRISE OF THE YEAR

In October 2014, we were thrilled to be named Scottish Social Enterprise of the year, an award which commends Social Enterprises that bring about considerable social change within communities across Scotland.

We were recognised for this award for being financially solid and self-financing through trade which is very rare for a charity and/or social enterprise.

We were able to demonstrate considerable vision and strategic direction via the amount of lettable square footage we have redeveloped for cultural use and future plans for expansion into the Scottish Highlands.

By providing our service, artists are enabled to practice their careers and contribute to the cultural vibrancy of Scotland.

Wasps staff felt that receiving this award was a great recognition of the effort and work that they do to champion the social enterprise sector. ▲

"Yet again a simply outstanding collection of social enterprise activity impressed the judging panel and resulted in worthy winners in all categories. Congratulations to all of the 2014 applicants who are, with imagination, creativity and dogged determination, showing the breadth, depth and reach of social enterprise in Scotland." Fraser Kelly, Chief Executive of Social Enterprise Scotland

NEW PROJECTS

THE BRIGGAIT CREATION CENTRE, GLASGOW

Many Glaswegians are familiar with the grandeur of the 1873 hall at our flagship building, the Briggait in Glasgow. However, less people are aware of the other halls within the building that date from 1889 and 1904. Both of these halls are partially redeveloped and will provide the 21,000 sq ft of space required to house the Briggait Creation Centre.

A Creation Centre is a space for multi-disciplinary art making - mixing visual art, performance, circus and other art forms and enabling exciting cross collaborations. This kind of multi-disciplinary centre is relatively common in Europe, but less so in the UK.

This £4.5m project will bring this area of the building back into productive use by creating a training and activity centre for dance, circus (including aerial and trapeze), street arts, physical theatre and visual arts, as Scotland's first Creation Centre. The facility will enable six organisations specialising in these fields to develop and thrive. It will support the regeneration of the River Clyde waterfront and bring substantial economic impact and health benefits to a highly deprived area.



The Briggait Creation Centre will include:

- ▶ A total space of 21,000sqft - one of the UK's largest facilities to develop artistic talent across art-forms; attracting 12,000 users and visitors per year.
- ▶ Six cross-art-form studios.
- ▶ Scotland's first dedicated space for physical performance and flying trapeze.
- ▶ Exemplary integrated studio and changing facilities for people of all abilities.
- ▶ A social enterprise café fronting onto Clyde Street.

The Briggait Creation Centre will provide a new home for the project partners: Conflux, YDance, Dance House, Aerial Edge and Indepen-dance and will allow them the space and high quality facilities that they need to grow and to thrive.

Each of these companies will have the ability to bring leading international companies to Scotland to train dancers and performers to the very highest of standards. A new generation of performers will be able to train and rehearse in Glasgow before entertaining audiences in Scotland, the UK and beyond.

In March 2015, we appointed Collective Architecture to lead on this second phase of the redevelopment of the Briggait and we aim to complete this redevelopment in the Summer of 2017. ▲

"Our practice has great admiration for Wasps, their partners and the work that they do. To have the opportunity to develop a major cultural centre within such a splendid historical setting overlooking the River Clyde is incredibly special."
Jude Barber – Project Director for Collective Architecture

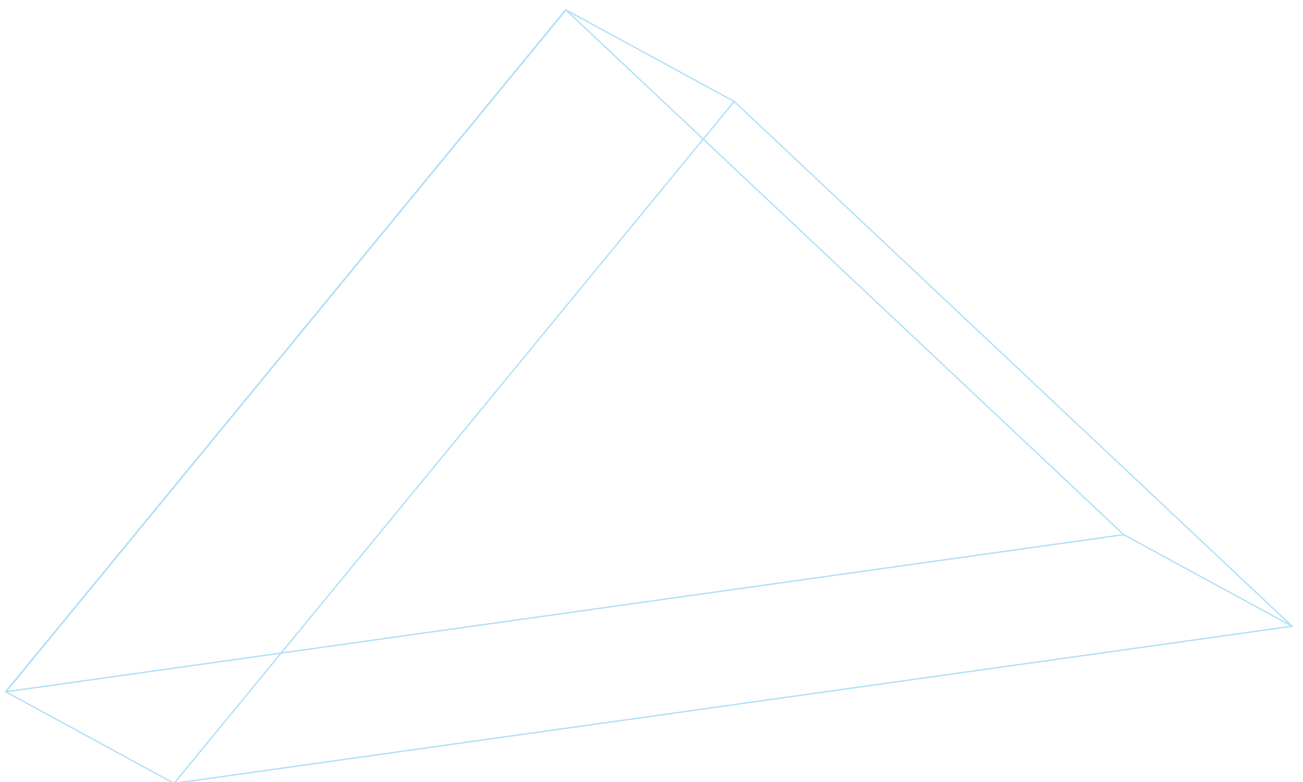


NEW PROJECTS / COMPLETION OF FIVE CUBED PROJECT

Five Cubed initially set out to develop five buildings in five communities in five years, through a strategic partnership between Scottish Arts Council/Creative Scotland and Wasps, with investments being agreed by both partners aiming to:

- ▶ Create up to 5 capital developments to expand the support of artists across Scotland
- ▶ Include a geographic spread of facilities
- ▶ Add some 45,000 sqft of space, supporting over 150 additional creative practitioners
- ▶ Make Wasps 100% self-sustaining, no longer reliant on public revenue grants

Links Studios in Nairn and the Old House in Skye are two of the final developments of this extended project (see details opposite). The Stromness Library project in Orkney will be the final of this project group with a completion date by March 2016. These last three projects ensure that the Five Cubed programme fully delivers on its aim to increase a geographic spread of Wasps' facilities across Scotland. ▲





NEW PROJECTS / LINKS STUDIOS NAIRN

We have been keen to expand the Wasps network into the Highlands for some time and this year we jumped at the opportunity given to us by Highlands Council and Highlands and Islands Enterprise to breathe new life into the former Links School in Fishertown, Nairn.

The building was a primary school until 1965 and then was used to deliver some NHS services until 2011 when the building was closed to the public. Since then the local community have been very keen to bring the building back into commission and given the level of their support, they are delighted that the building will be used to support local artists.

Links School has nine studio spaces for artists and makers, one office/studio space for a cultural or creative social enterprise and a communal space which we hope can be used by both building tenants, visiting artists and for small local events.

Funding for the project has come from a variety of sources which include:

- ▶ Creative Scotland £50,000
- ▶ HIE £40,239
- ▶ Wasps £42,500
- ▶ Highland Council £25,000 (through reducing the purchase price from £110,000 to £85,000).

We would like to thank Councillors Liz MacDonald and Colin MacAuley for their support for this project. ▲

"Fishertown is our cultural district and includes the art society and our Little Theatre. The creative hub planned by Wasps should fit in with our existing activities, enhance and support the community and provide much needed employment in our town. I am also delighted that we now have a social enterprise in Nairn."

Liz MacDonald, Councillor – Nairn, Badenoch and Strathspey Area Committee



NEW PROJECTS / OLD HOUSE, BRAES, LOWER OLLACH, ISLE OF SKYE

Work continues on this fantastic property that was gifted to the organisation in 2013 from the estate of Vice Admiral Sir Roderick Macdonald KBE.

"Admiral Roddy's House" in Braes is well known. The Admiral had a distinguished naval career including working with NATO, the US Navy and working as an aide to the Queen.

The house itself is sited in some 0.5 acres of ground which is positioned approximately 6 miles south of Portree. On a clear day, the Old Man of Storr, the Cuillins and the Isle of Raasay can be seen from nearby viewpoints.

We have appointed Dualchas – an architects practice based on the Isle of Skye and in Glasgow - to re-model the Old House to create a communal social space, 3 bedrooms and three creative work spaces in outbuildings and as a new build addition to the rear garden.

All the planned refurbishment to the property will be completed in 2015/16.

Alongside visual arts residencies, we hope that the Old House will also support other creative practices including writing, design, music & the performing arts, and create partnerships with other creative organisations/individuals on the island. ▲

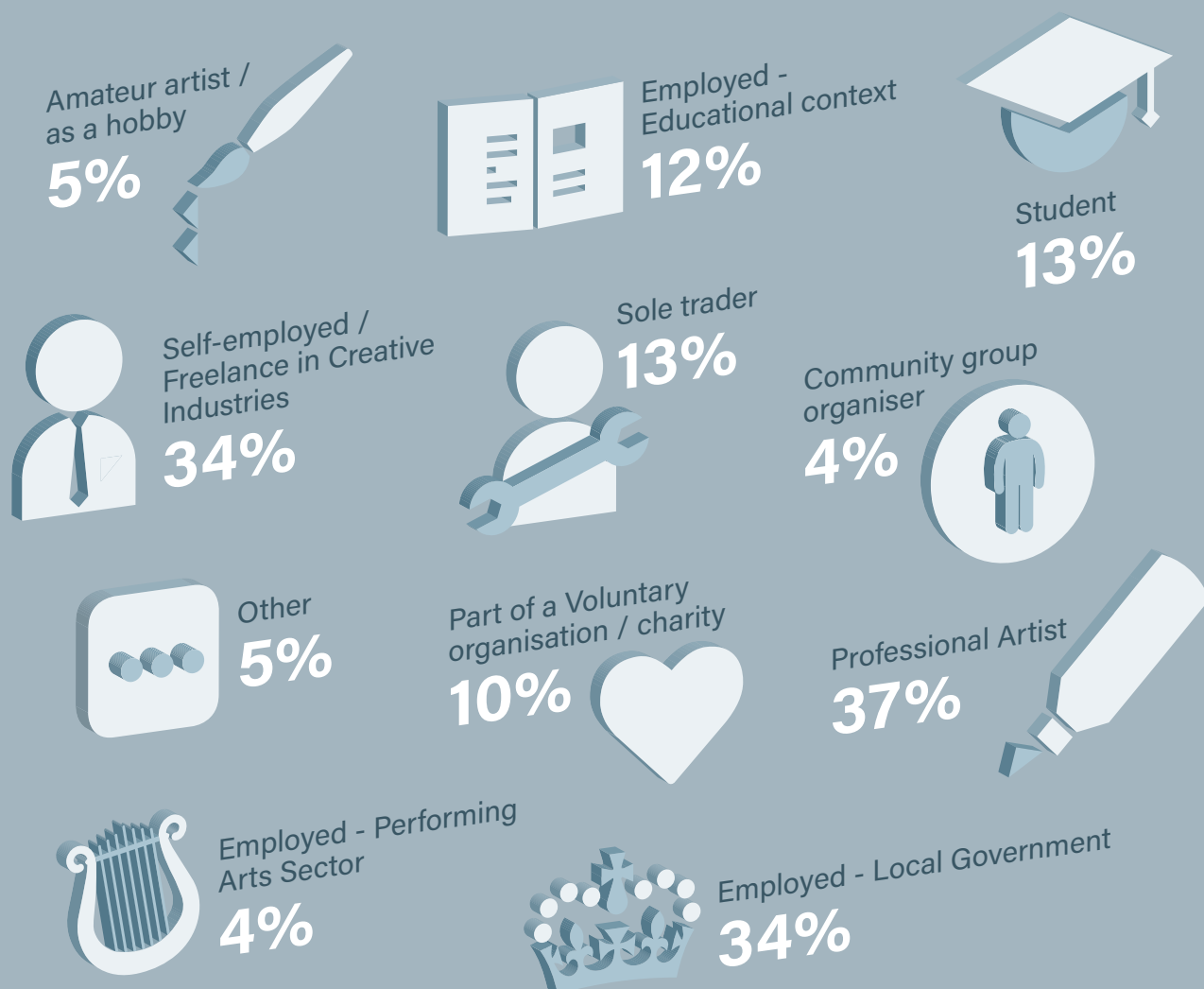
DEMAND ASSESSMENT

One of our main objectives as a Social Enterprise is to support creative industries and individuals all across Scotland. This means that we are continually assessing demand in locations where we currently do not provide space. In partnership with local authority, education and enterprise partners, we are investigating key demand in Inverness, Perth and Stirling and will work to secure premises and funding for these projects over the 2015-16 period.

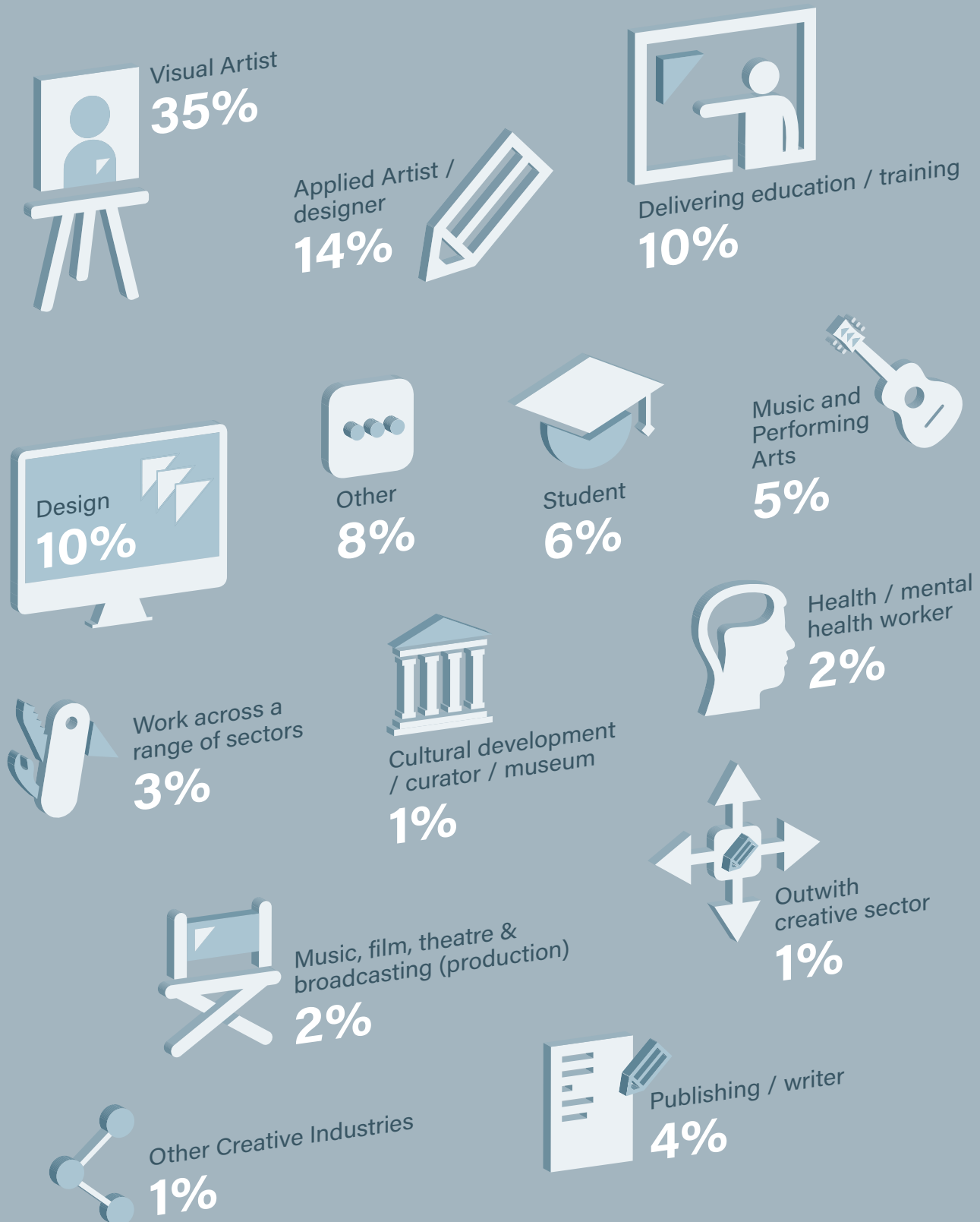
This work is being funded by the Scottish Cities Alliance as a strategy in partnership with Stirling, Perth and Kinross and Highland Councils to explore the development of a creative industries hub space in each of Scotland's three smaller cities.

In May 2014, Perth College helped us to distribute a survey to creatives in the Perth area and 224 people responded. Our demand survey gave us the following results:

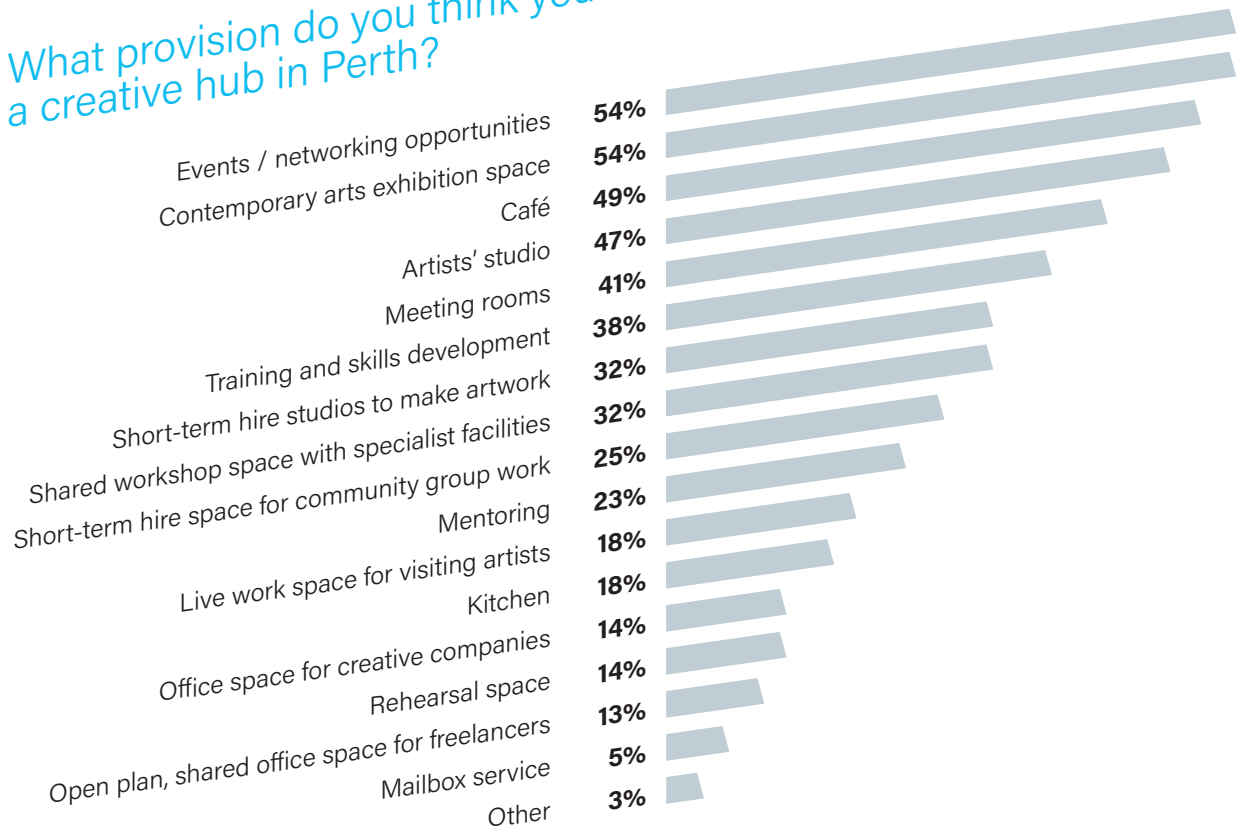
In what capacity are you interested in a creative hub?



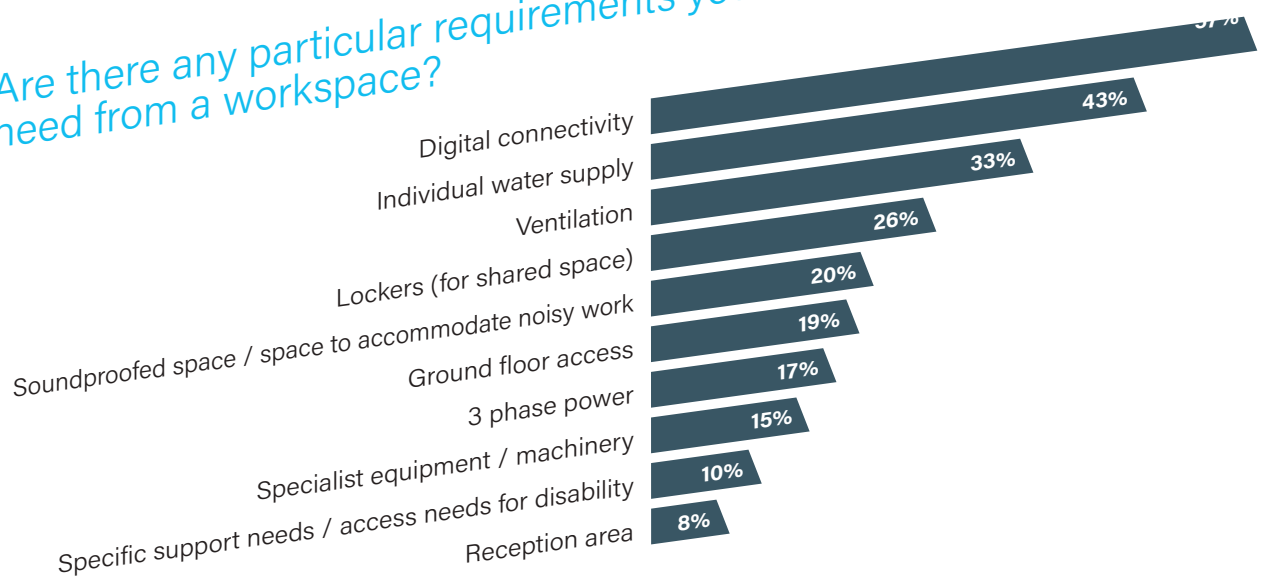
Please tell us what area you work in



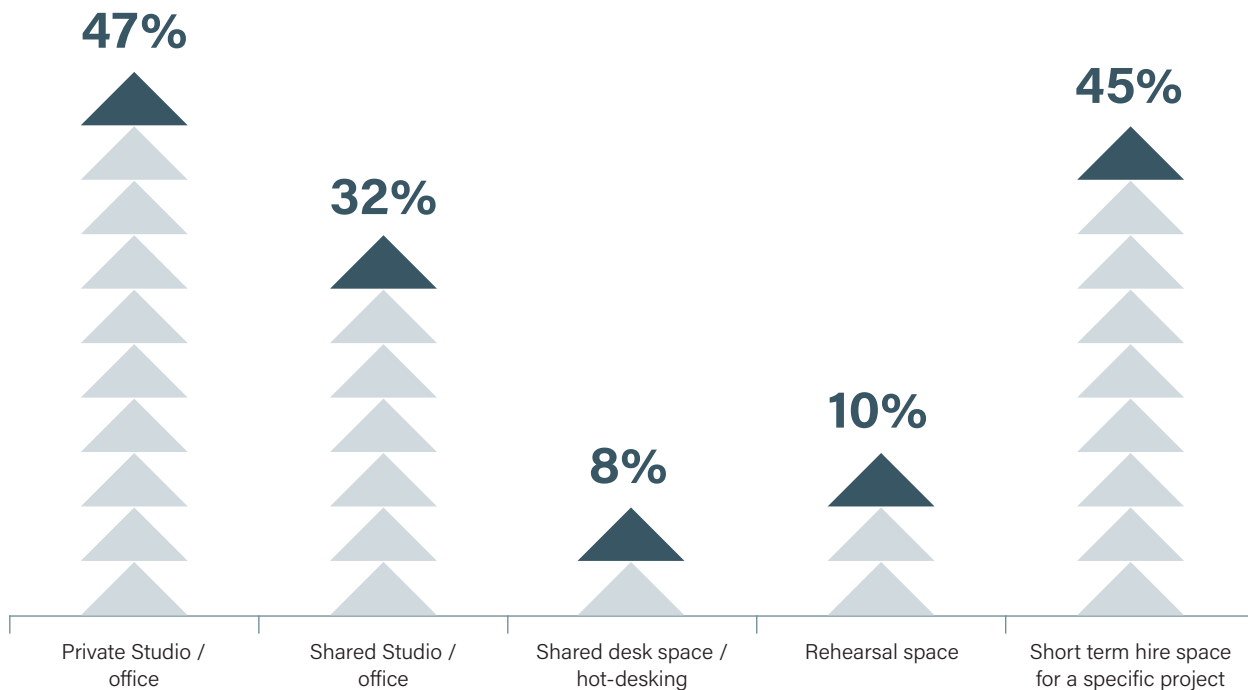
What provision do you think you would use in a creative hub in Perth?



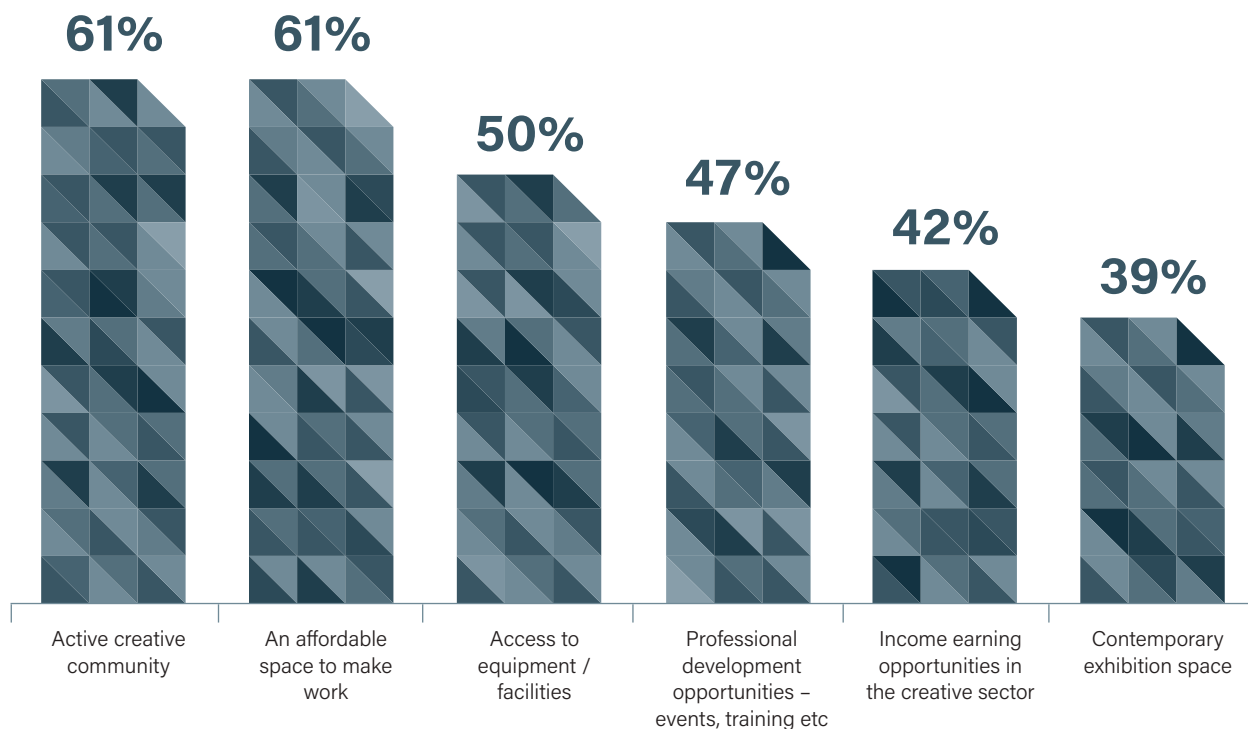
Are there any particular requirements you would need from a workspace?



What type of space would you be interested in accessing?



What would encourage graduates to stay in Perth? (student responders only)



In September 2014 we distributed a survey to creatives in the Stirling area and 119 people responded. This was followed by a Stirling Hack Event with the local artist community in October. Both survey and event were carried out in collaboration with Icecream Architecture, Creative Stirling, Art Link and a consultant. Our demand survey gave us the following information:

Are you?

A professional Artist



49%

Self-employed/freelance within the Creative Industries



55%

Employed within the Performing Arts/Entertainment Sector



3%

Employed within an Educational context



20%

Employed within a Local Government context



3%

Part of a Voluntary organisation/Charity/Social Enterprise



18%

Sole Trader



18%

Community Group Organiser



3%

Student in Further/Higher Education/Recent Graduate



19%

Other



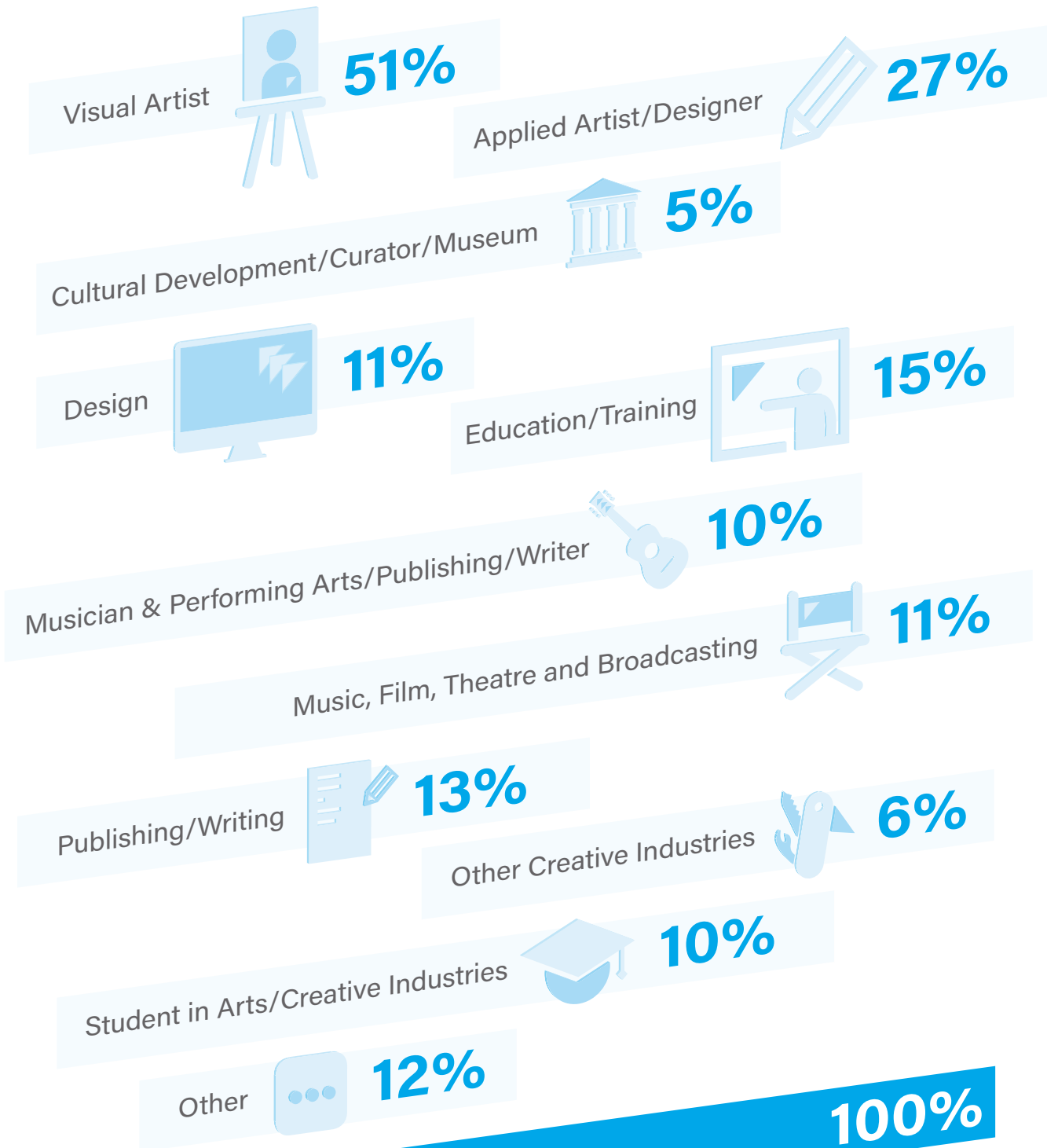
8%

Total Respondents of 119

100%

AREA: Stirling

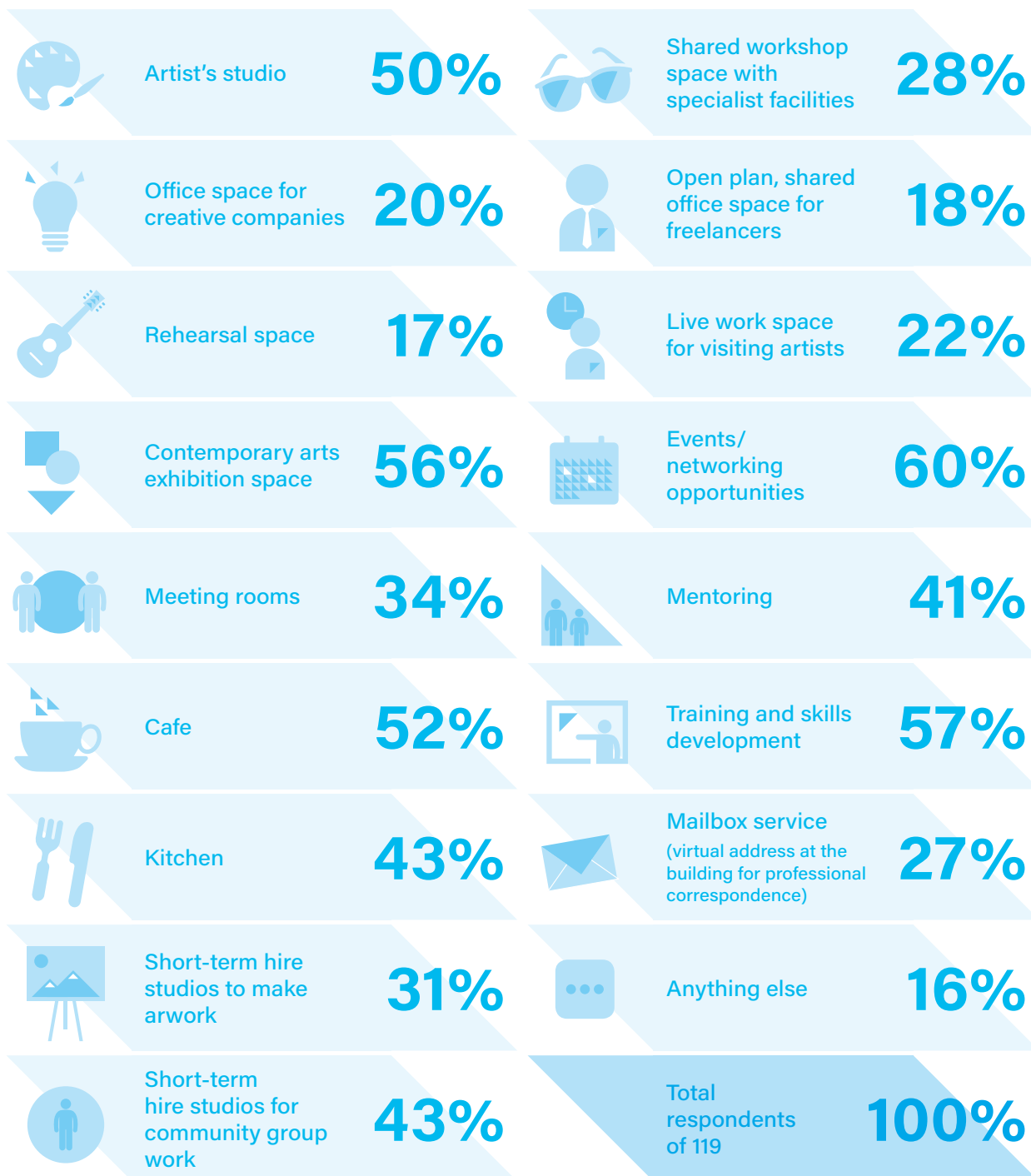
Please tell us what area you work in...



Total Respondents of 119

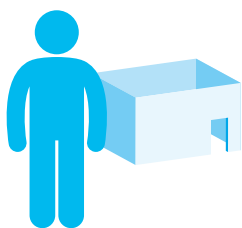
100%

What provision would you use in a creative hub in Stirling?

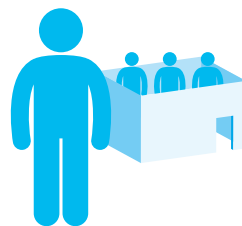


AREA: Stirling

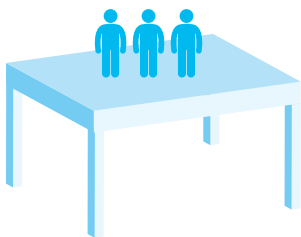
Would you be interested in renting workspace (eg. office, shared workspace, rehearsal space) in a creative hub?



Private studio/office
62%



Shared studio/office
36%



Shared desk space/
hot-desking
62%



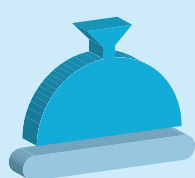
Rehearsal space
18%



Short term hire space
for a specific project
58%

Total Respondents of 119
75%

Are there any particular requirements you would need from a workspace?

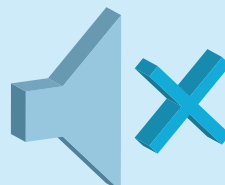


Reception area
27%

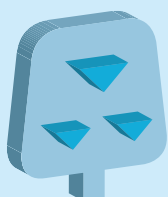


Specific support
needs/access needs
for disability
17%

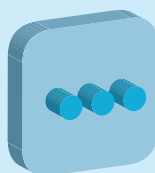
Digital
connectivity
72%



Soundproofed space or
space to accommodate
noisy work
29%



3 phase power
20%

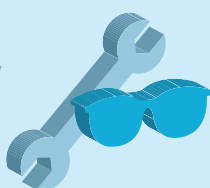


Other
18%



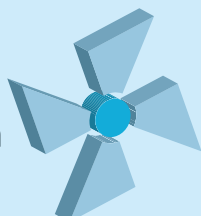
Ground floor
access
52%

Specialist
equipment/
machinery
19%

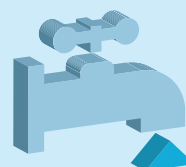


Lockers (for shared space)
32%

Ventilation
57%



Individual
water supply
56%



Total respondents of 119
52%

CREATIVE PROJECTS

CULTURE/FESTIVAL 2014

The Briggait, South Block and Hanson Street were all key venues in the Culture 2014 programme which accompanied all Commonwealth Games events across the city of Glasgow. Alongside incredible sporting action, Festival/Culture 2014 filled Glasgow with exciting entertainment and culture from the rest of Scotland and across the world. As part of this amazing cultural offer to visitors and people of Glasgow, we were able to host the following fantastic projects:



EMPIRE CAFÉ, THE BRIGGAIT, 24TH JULY – 3RD AUGUST 2014

Led by Architect Jude Barber and writer Louise Welsh, The Empire Café was an exploration of Scotland's relationship with the North Atlantic slave trade through coffee, sugar, tea, cotton, music, visual art, academic lectures, poetry, debate, workshops, historical walks, film and literature. Food served in the café was inspired by recipes from a number of Commonwealth Countries and the café was operated by McCune Smith, Bakery 47 and Dear Green Coffee Roasters.

Contributors to the programme include poets Jackie Kay, Millicent Graham, Alan Riach and Fred D'Aguiar; authors Andrea Stuart, James Robertson and Chris Dolan, internationally acclaimed artist Graham Fagan, Hip Hop band Stanley Odd, The Big Big Sing and Dr Richard Benjamin of the Liverpool Slavery Museum, to name a few. ▲



SCOTLAND CAN MAKE IT, SOUTH BLOCK, 19TH JULY – 3RD AUGUST 2014

Scotland Can Make It! was a collection of limited edition souvenirs, commissioned by Briggait tenants and design curators – Panel. All six souvenirs were designed and manufactured entirely in Scotland by leading Scottish designers and artists, working in close collaboration with producers, fabricators and developers. The Scotland Can Make It! Project was intended to showcase the quality and innovation in Scottish design and production. Designers included : Tommy Perman, Angharad McLaren, Katy West, Beca Lipscombe, Emlyn Firth, Marianne Anderson, Neil McGuire, Claire Duffy, Ziggy Campbell, Simon Kirby.

The Scotland Can Make It! souvenirs were available to buy at selected outlets across Scotland, with South Block being the flagship store. ▲





ASSEMBLE: AN INTERNATIONAL PRINT WORKSHOP, HANSON STREET, GLASGOW, 14TH JULY – 2ND AUGUST 2014

Assemble was an exhibition and participatory project led by artist Rachel Barron at our Hanson Street studios, as part of Festival 2014. The project took place across two venues: The Hanson Street project space, and Govanhill Baths.

This interactive print workshop comprised of specially designed print tables and ink stamps, which could be used by the public over the duration of the exhibition to print a fabric flag, composed of vibrant blocks of colour and pattern.

All flags created were displayed at the workshop, before being transferred to the original Ladies Pool at Govanhill Baths, where they form part of an extensive, evolving installation of hundreds of public prints. The aim of Assemble was to unite local residents with international visitors, capturing the creativity and diversity of the city at a significant moment in Glasgow's history. ▲



THE COMEDOWN, THE BRIGGAIT, 11TH OCTOBER – 1ST NOVEMBER 2014

The Comedown was a large scale sculptural installation by artist Stephen Murray. This large, figure of 8 velodrome filled the Briggait 1873 Hall in its entirety and made reference to Greco-Roman ideals of sport, competition and culture. As the installation of the velodrome took place after the Commonwealth Games were over, the work acted as a reflection of both the games and Scotland post referendum.

Alongside a much anticipated performance where a large audience was treated to a thrilling performance by track riders, Stephen also held four sessions for members of the public to come and ride on the track themselves with bikes and equipment provided. ▲

WASPS ARTISTIC PROGRAMME

RECLAIMED: THE SECOND LIFE OF SCULPTURE, THE BRIGGAIT, 5TH APRIL - 2ND MAY 2014

This was our first project curated in house and was our most ambitious exhibition to date. The exhibition featured work held in long-term storage, including historical, modern and contemporary pieces, some of which had not been seen by the public for over two decades. Works were displayed within a specially constructed sculptural landscape filling the Briggait's 1873 Hall in its entirety.

The exhibition included the work of some of the UK's most interesting contemporary artists alongside important historical works, celebrating a multitude of sculptural practices, whilst addressing significant issues surrounding the production and collection of three dimensional work.

Exhibiting Artists included Lotte Glob, Walker and Bromwich, Klaus Weber, Matthew Darbyshire, Jess Flood Paddock, Andy Holden, Alex Allan, Ewan Robertson and Gordon Munro, Jonathan Owen, Bobby Niven, George Wyllie, Iain Kettles, James McLardy, Alex Frost, Clare Stephenson, Nick Evans, Sarah Forrest, Joanne Tatham & Tom O'Sullivan, Neil Livingstone, Jock Mooney, Beagles and Ramsay, Emma Pratt, Marvin Gaye Chetwynd, David Shrigley, Ross Sinclair, Calum Stirling and historic works borrowed from Glasgow Museums. ▲

"This is a really interesting idea and I think many people will find it very enjoyable to look at the pieces and think about which of them are still pertinent" **Artist Ross Sinclair**



WASPS OPEN STUDIOS 2014, 11 LOCATIONS ACROSS SCOTLAND, OCTOBER 2014

Wasps Open Studios 2014 took place across the month of October in 11 of our studio spaces across Scotland. 181 of our studio artists took part in the event and attracted 3540 visitors.

Wasps Open Studios 2014 was part of GENERATION, a celebration of the last 25 years of contemporary visual art in Scotland. Being part of the GENERATION programme allowed us to fund a number of additional activities to compliment the Open Studios event including 21 talks, 14 workshops, 10 demonstrations, 2 performances and 6 exhibitions.

Most notable was Creative Careers, a careers fair for young people considering a career in art and a CPD evening for teachers. Both sessions included workshops, studio tours and talks. Contributions were sought from artists and arts professionals who were working within a field that the audience were likely to be less familiar with. Both events were held at Hanson Street St, Glasgow and St Mary's Mill Studios, Selkirk and many studio holders within the building were keen to be involved. 151 young people attended the event and we feel that Creative Careers could potentially be developed into an annual event to be delivered across the network. ▲

"There was so much to see and stimulate one's interest. I particularly enjoyed learning about making paper, and hope to join one of the courses in the future." Open Studios Attender 2014.

THE ANNA LOBNER GLASGOW/DUSSELDORF EXCHANGE, OCTOBER/NOVEMBER 2014

Now in its eleventh year, the Anna Lobner Glasgow/Dusseldorf exchange has gained momentum both in reputation and ambition. Artists who have previously participated in the exchange include Hardeep Pandhal, Danny Holcroft and Turner prize nominee Ciara Philips.

The 2014 Anna Lobner Dusseldorf exchange was awarded to Glasgow based artist Lauren Gault. Lauren received the chance to develop new work in this great city for artists and was awarded a studio and stipend to make this possible.

Dusseldorf based artist Moritz Fiedler was selected to join us at our Hanson Street studios in Glasgow. Moritz works across a number of mediums including sculpture and audio. Alongside looking for new influences and inspirations, Moritz was very interested in the Glasgow's musical heritage and aimed to explore the influences that traditional Scottish music has on our contemporary culture. ▲

"This time, experimentation, critical feedback and outcome with new audiences will be an invaluable tool to the development of my practice." Lauren Gault, Anna Lobner exchange recipient, 2014.

WASPS ARTISTS' STUDIOS

	31-Mar-14	31-Mar-15
INCOME		
Rental Income	1,171,663	1,246,722
Arts Programme: income	67,280	59,634
Public Grants	60,300	26,814
Interest receivable	231	536
Grant receivable from Wasps Trust	500,000	425,000
Donations from Wasps Creative Industries CIC	87,767	141,707
Total Income	1,887,241	1,900,413
EXPENSES		
Rental payable	705,503	716,890
Artists' Studio Expenditures (excl. rent payable)	470,154	444,387
Arts Programme: expenditure	56,363	66,794
Staffing costs	394,538	410,311
Overheads	62,642	130,600
Interest and Bank Charges	24,540	22,972
Depreciation	56,797	58,952
Total Expenses	1,770,537	1,850,906
Net surplus on operations	116,704	49,507

WASPS CREATIVE INDUSTRIES CIC

INCOME		
Rental Income & Service charges	294,525	319,454
Café Sales	48,144	78,678
Interest receivable / Other income	133	165
Total Income	342,802	398,297
EXPENSES		
Rental payable	67,855	80,357
Tenant service costs (CIC commercial tenants)	111,773	94,889
Café expenditure	42,108	62,428
Overheads	4,140	4,400
Interest and Bank Charges	970	1,309
Depreciation	5,127	5,783
Interim donation to Wasps Limited	87,767	141,707
Total Expenses	319,740	390,873
Net surplus on operations	23,062	7,424

THE WASPS TRUST

INCOME		
Rental Income	642,565	656,317
Interest receivable / Other income	48	56
Grant Income	-	5,900
Total Income	642,613	662,273
EXPENSES		
Staffing costs	6,400	(1,600)
Overheads	12,591	21,702
Interest and Bank Charges	36,402	34,100
Reorganisation Costs	30,376	25,663
Other expenses	800	9,000
Grant to Wasps Limited	500,000	425,000
Total Expenses	586,569	513,865
Net surplus on operations	56,044	148,408
Total surplus on all operations	195,810	205,339

CONTRIBUTORS AND SUPPORTERS

Wasps Team:

Audrey Carlin – Senior Executive Director for Business Development
 Stuart McCue Dick – Senior Executive Director of Corporate Services
 Alison Fullerton – Head of Development
 Alan Simpson – Head of Property
 Chris Biddlecombe – Studio Projects Manager
 Ian Fordyce – Management Accountant
 David Cameron – Maintenance Officer
 Lois Green – Studios Administrator
 Helen Moore – Marketing Officer
 Michelle Emery-Barker – Curator
 Alexis Smith – Finance Assistant
 Liliias Camp – Receptionist

South Block Team:

Ursula Cox – Receptionist
 Natalia Palombo – Receptionist

All that is Coffee Team:

Fiona Danskin – Manager
 Christopher Duncan – Barista
 Warwick Beyers – Barista

Wasps Board:

CHAIR – Andrew Burrell (AA), Dip Arch, Dip UD+RP, FRIAS, AOU -Development Director, Sigma Capital Property Limited
 VICE – CHAIR – Peter McCaughey – Artist and Director of Wave Particle Ltd
 David Bankier LLB – Solicitor, Pinsent Masons LLP
 Annette Bruton BEd DIPSE – Principal, Edinburgh College
 Audrey Carlin BSc (Hons), MRTPI – Director of Business Development, Wasps Studios
 Dr Steve Inch OBE, D.Univ, Bsc (Hons) Dip TRP, MIED – Former Executive Director of Development and Regeneration Services, Glasgow City Council
 Calum Macaulay – Chief Executive Officer, Albyn Housing Society Ltd
 Eleanor McAllister OBE FRIAS FRSA – Consultant at Eleanor McAllister Ltd

Stuart McCue-Dick BAcc CA – Director of Corporate Services, Wasps Studios (Secretary of Wasps Trust)
 Gordon Moir – Partner at Webb Henderson, Legal and Regulatory Advisors
 Leslie Robb FFA – ex Partner, Baillie Gifford and Co, Global Investment Manager
 Prof Ian Wall, FRSE FRICS DSc HonFRIAS
 Mary Wilson BEd DPE – Director, AMW Property Ltd

The following are Trustees only:

Malcolm Deans BSc FRICS – Director of Campus Services, Heriot Watt University
 Tom Laurie OBE – Economic Consultant & partner in the Laurie Consultancy

The following are Board Members only:

John Crallan ARIAS AADip – Freelance Architect
 Alan Pert – Owner, Nord Architecture

Supporters:



Scottish Investment Fund
 Hugh Fraser Foundation
 Aberbrothock Skea Charitable Trust
 Leng Charitable Trust
 The Tay Charitable Trust



WHERE WE ARE

1. GLASGOW

For all enquiries, please contact our head office at:

The Briggait, 141 Bridgegate
Glasgow G1 5HZ

T: 0141 553 5890

E: info@waspsstudios.org.uk

www.waspsstudios.org.uk

Social: facebook.com/waspsstudios / [@waspsstudios](https://twitter.com/waspsstudios)

77 Hanson Street, G31 2HF

South Block, 60 Osborne Street, G1 5QH

15 East Campbell Street, G1 5DT

2. EDINBURGH

Patriothall, 48A Hamilton Place, Stockbridge, EH3 5AY

78 Albion Road, Leith, EH7 5QZ

2-3 West Park Place, Dalry EH11 2DJ

3. ABERDEEN

36-48 Langstane Place, AB11 6FB

Eagle House, 15 Shore Lane, AB11 5BF

4. DUNDEE

2nd, 3rd and 4th floors, Meadow Mill,

West Henderson's Wynd, DD1 5BY

5. IRVINE

Courtyard Studios, 128 Harbour Street, KA12 8PZ

6. NAIRN

Links Studios, Grant Street, Fishertown, Nairn IV12 4NN

7. SHETLAND

The Booth, New Street, Scalloway, ZE1 0TQ

8. SELKIRK

Unit 1, St Mary's Mill, TD7 5EW

9. NEWBURGH

67 High Street, Newburgh, KY14 6AH

10. KIRKCUDBRIGHT

Cannonwalls and Claverhouse, 117 High Street,

Kirkcudbright, DG6 4JG

11. SKYE

Old House, 4 Lower Ollach, Braes, Isle of Skye IV51 9LJ



Wasps Studios

Registered in Scotland No. SC062117

Scottish Charity No. SC001351

The Wasps Trust

Registered in Scotland No. SC022115

Wasps Creative Industries CIC

Registered in Scotland No. SC383689