



'Highlight' by Richard Goldsworthy, photography by Alexander Hoyles

Patriothall

Patriothall Studios
Wasps Scotland Ltd
Patriothall
Edinburgh
EH3 5AY

Gallery Pack



An Introduction to Patriothall

Wasps has operated Patriothall Studios, a red-brick former industrial building in the heart of Stockbridge, since 1984. It is now home to over fifty artists and features a gallery space which supports an annual programme of exhibitions.

Patriothall Gallery exists to support both Wasps tenants and the wider creative community in Edinburgh by providing prominent, flexible, and accessible gallery space available for a wide range of internal and external hires.

The Gallery is situated on the ground floor and has been flexibly designed to host all kinds of commercial and non-commercial practice and can be used for exhibitions, film screenings, forums, performances, and numerous other events.

The Gallery aims to host local, national and international visual arts organisations as well as showcasing high quality visual art and craft.

Gallery Images



Front Gallery Space (Image 1)



Front Gallery Space (Image 2)



Back Gallery Space (Image 1)

Gallery Features

The Gallery is made up of two large 'white cube' gallery spaces with a fixed lighting rig.

Dimensions

Front Gallery Space – 11.75m (L) x 6.6m (W) = 77.29 m²

Back Gallery Space – 8.27m (L) x 5.17m (W) = 42.76 m²

Capacity

Front Gallery Space – 52 people

Back Gallery Space – 29 people

Wall Features

White emulsion painted plywood walls surround the gallery spaces, with ample natural light across one side of each gallery space. The gallery walls can be used to install works.

Walls and Doors

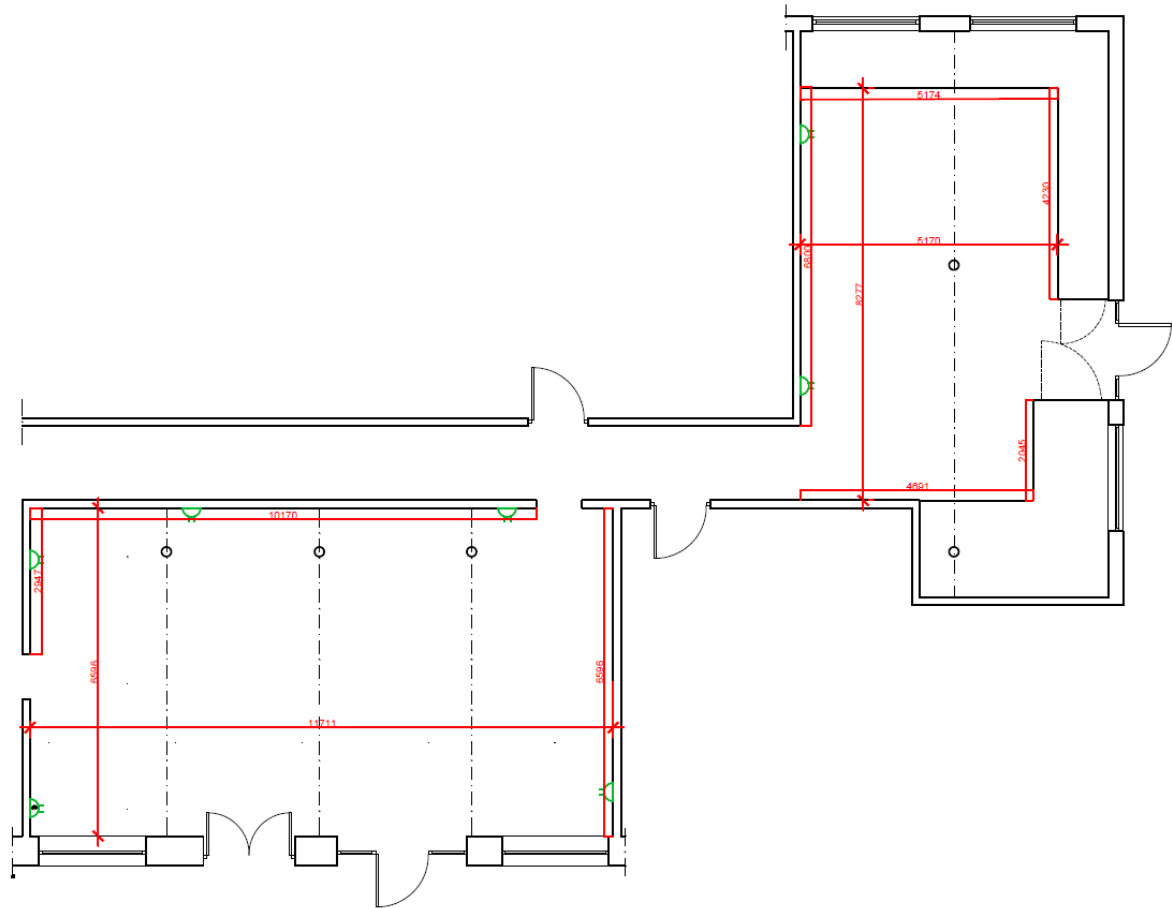
The main entrance door opens into a small foyer, leading you through the white double swing doors with a small window in each that take you into the front gallery space. To the left side of the gallery, there is a door that leads you through to another foyer where the ground floor toilet can be located. In front of you and slightly to the right, there is an open doorway, and turning to your right, will lead you through to the back gallery space.

Windows allowing plenty of natural light into both spaces. External door (fire exit) leads out of the back gallery space, which also allows natural light.

Tech

The lighting rig is presently at a height that is not safely accessible to artists, and we therefore ask that artists do not alter the lights. In the event of lighting adjustments being required, Wasps will call an electrician to undertake the works safely. Please communicate these needs to the building manager via property@waspsstudios.org.uk in advance of the event.

There are 4 x twin sockets available in the front gallery space and there is 1 x twin socket available in the rear gallery space. Wi-Fi is also available.



Opening Hours and Invigilation

The building is accessible to tenants 24/7. Invigilation is coordinated by the artist. However, should cover need to be arranged for whichever reason, then please detail this information in writing to Wasps in advance of the event.

Artists are able to arrange an evening preview for the event or exhibition. The date and time of all openings will be arranged in advance, but openings usually take place 6-8pm on Friday evenings. Exhibitors are responsible for supplying refreshments for their exhibition or event opening.

Installation Information

General Health and Safety Information

A risk assessment is required prior to any event taking place in the building. This will then be reviewed by Wasps Property Team.

If you already have liability insurance, a copy of this must also be included if your application is successful.

When vacating the building, please ensure that it is secure, e.g., doors closed/locked and windows closed.

Please familiarise yourself with the Fire Action Procedures to ensure you know how to vacate the building safely in the event of an emergency.

Tools and Equipment

The gallery has access to loanable plinths, but we are unable to loan tools or materials. These must be provided by the artist and covered under the appropriate insurance.

Any electrical products or tools being brought and used on site by the artist must be PAT tested and in date.

The artist is responsible for installing and deinstalling works, which includes returning the gallery to its original condition. Please be mindful of this and ensure you bring the appropriate equipment needed. For example, filler for any drilling done in walls. If this is not done, you may be at risk of losing your booking deposit.

Space Specific Exclusions

We request that no works are fixed into the grey painted concrete floor without prior permission in writing.

Who to contact for support

Please contact our Arts and Projects team at projects@waspsstudios.org.uk for any questions or queries regarding your booking. You may also contact Wasps via telephone at 0141 553 5890.

Booking Information

We are happy to consider all manner of projects, exhibitions and events for this space and we welcome projects that are ambitious, innovative, and experimental. The focus of these spaces is to present contemporary visual art and design and crossovers between these art-forms.

All applications will be considered. We ask that you provide us with as much information as possible about your proposed idea (time scale, dates, etc.). Should you have any questions about our application process, please do not hesitate to get in touch. Please email all enquiries to [**projects@waspsstudios.org.uk**](mailto:projects@waspsstudios.org.uk)

Wasps is able to assist you with limited marketing of your event, as well as selling your work should you choose to. There is a commission fee when selling your work through Wasps. This commission will be discussed and agreed prior to your event.

All successful applicants will be required to sign an artist agreement, that agrees to deliver the proposed project in an outlined timeframe. The artists must state in advance, any talks, workshops or other events that will be linked to the exhibition.

[**Apply here**](#)