



*'IV5', Group Show, photography by Paul Campbell*

# Inverness Creative Academy – Assembly Hall, Gordon and Ena Baxter Gallery

Midmills Building, Stephen's Street

Inverness

IV2 3JP

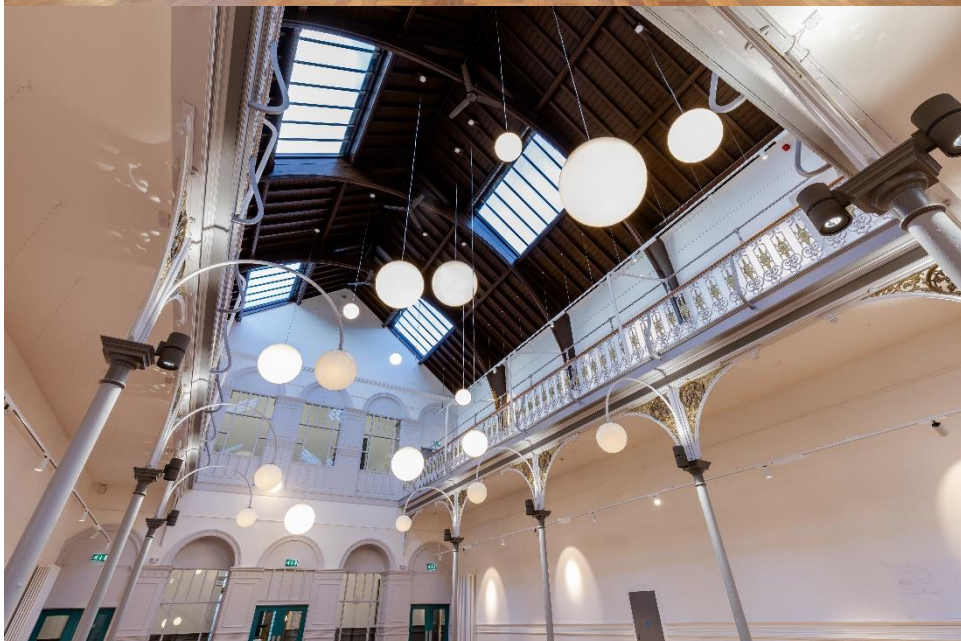
## Gallery Pack

## An Introduction to Inverness Creative Academy

Inverness Creative Academy is a £5.7m project that transformed two beautiful B-listed former school buildings on the old Inverness Royal Academy site in the Crown area of the city into the largest creative facility the Scottish Highlands for artists, designers, makers, creative industries, cultural social enterprises and the community.

The two buildings currently provide 3,200 m2 in floor area and therefore have the capacity to make a considerable contribution to local heritage regeneration and to the growth of the wider creative economy in the Highlands.

### Images of the Space







*Above three images credited to Paul Campbell*

## **Accessibility**

Inverness Creative Academy is fully accessible across both phases of the building.

As an organisation Wasps is committed to assisting our tenants and building users to access green and sustainable modes of transport when travelling to and from our buildings, and to reduce the environmental impact of single-user car journeys. We encourage cycle travel and Inverness Creative Academy is well connected with public transport and less than a ten minute walk from Inverness Train Station and Inverness Bus Station. The nearest car park is at Eastgate Shopping Centre.

## **Features**

### **The Assembly Hall**

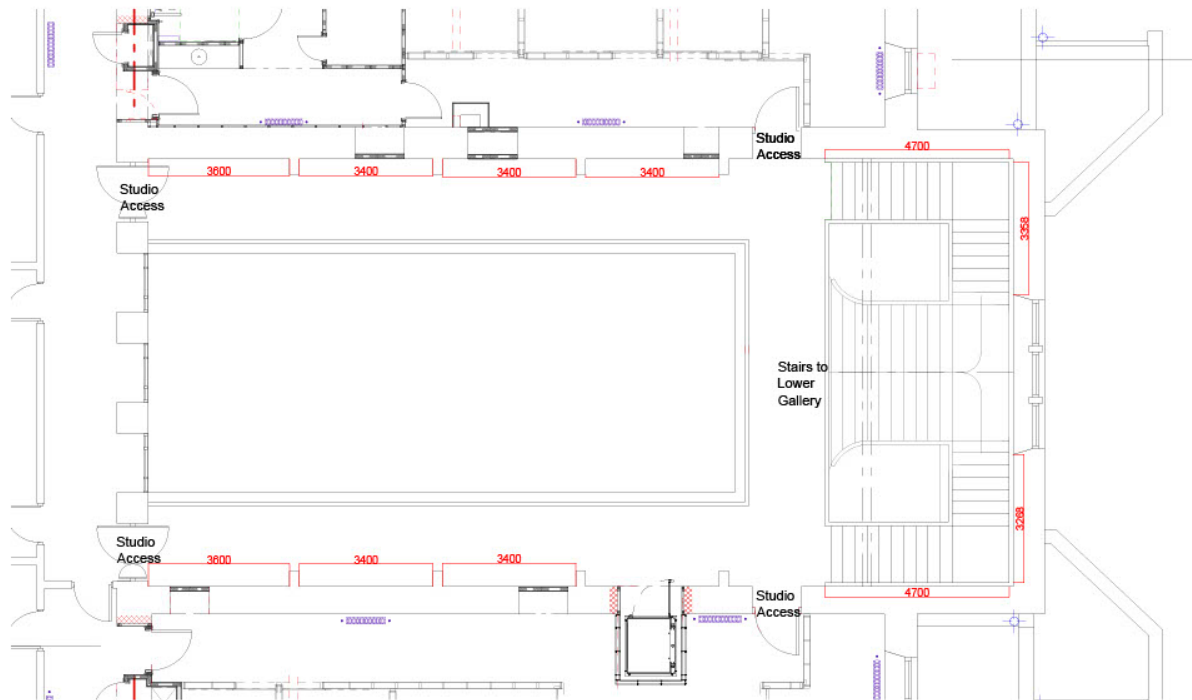
The Assembly Hall is a large gallery space measuring 178m<sup>2</sup>. It lends itself well to both floor based and wall mounted work. 2D work may be drilled into the walls or hung from picture rails – please note these would require working at height using a ladder for hanging install. There is adjustable track lighting in the space.

Dimensions – 10.9m x 16.9m – 178m<sup>2</sup>

Capacity – 134 people

## Gordon and Ena Baxter Gallery

Overlooking the Assembly Hall, the Gordon and Ena Baxter Gallery space is a balcony style mezzanine that allows viewers to walk round the space. This space would mainly be suitable for wall mounted work though some floor-based work may be accepted.



## Opening Hours and Invigilation

The opening hours are Monday – Saturday 10am - 5pm

Invigilation is coordinated by the artist. However, should cover need to be arranged for whichever reason, then please detail this information in writing to Wasps in advance of the event.

Artists are also able to arrange an evening preview for the event or exhibition. The date and time of all openings will be arranged in advance. Exhibitors are responsible for supplying refreshments for their exhibition or event opening.

## **Installation Information**

### **General Health and Safety Information**

Prior to any event taking place at Inverness Creative Academy, a risk assessment must be carried out. This will then be reviewed by our Wasps Property Team.

If you have liability insurance, a copy of this must be provided in the case of all successful applications.

When vacating the building, please ensure that all doors and windows are closed.

We ask that you familiarise yourself with any Fire Action Procedures, ensuring you know how to vacate the building in a safe manner in the event of an emergency.

### **Tools and Equipment**

The space has access to loanable chairs and plinths, but we are unable to loan tools or materials, these must be provided by the artist and covered under the appropriate insurance.

Any electrical products or tools being brought and used on site by the artist must be PAT tested and in date.

The artist is responsible for installing and deinstalling works, which includes returning the gallery to its original condition. Please be mindful of this and ensure you bring the appropriate equipment needed. For example, filler for any drilling done in walls.

### **Space specific exclusions**

Drilling/fixing into the floor is not permitted.

Hanging work from the ceiling is not permitted.

### **Who to contact for support**

Please contact our Arts Enterprise Officer Tavienne Bridgwater on 0141 553 5890 or alternatively you can email at [tavienne@waspsstudios.org.uk](mailto:tavienne@waspsstudios.org.uk)

## Booking Information

Hire costs for the Assembly Hall are £300 per week (or a reduced rate of £250 per week for Wasps tenants). For any activities out with opening hours, a member of Wasps staff must be present. This is at a cost of £24 per hour with a minimum 3 hour call out.

We are happy to consider all manner of projects, exhibitions and events for this space and we welcome projects that are ambitious, innovative, and experimental. The focus of these spaces is to present contemporary visual art and design and crossovers between these art-forms.

All applications will be considered. We ask that you provide us with as much information as possible about your proposed idea (time scale, dates, etc.). Should you have any questions about our application process, please do not hesitate to get in touch. Please email all enquiries to [projects@waspsstudios.org.uk](mailto:projects@waspsstudios.org.uk)

Wasps is able to assist you with limited marketing of your event, as well as selling your work should you choose to.

All successful applicants will be required to sign an artist agreement, that agrees to deliver the proposed project in an outlined timeframe. The artists must state in advance, any talks, workshops or other events that will be linked to the exhibition.