



*Deep Space Travel by RCW Studio, Photography by Alexander Hoyles*

# South Block

60-64 Osborne Street

Glasgow

G1 5QH

## Gallery Pack

## An Introduction to South Block



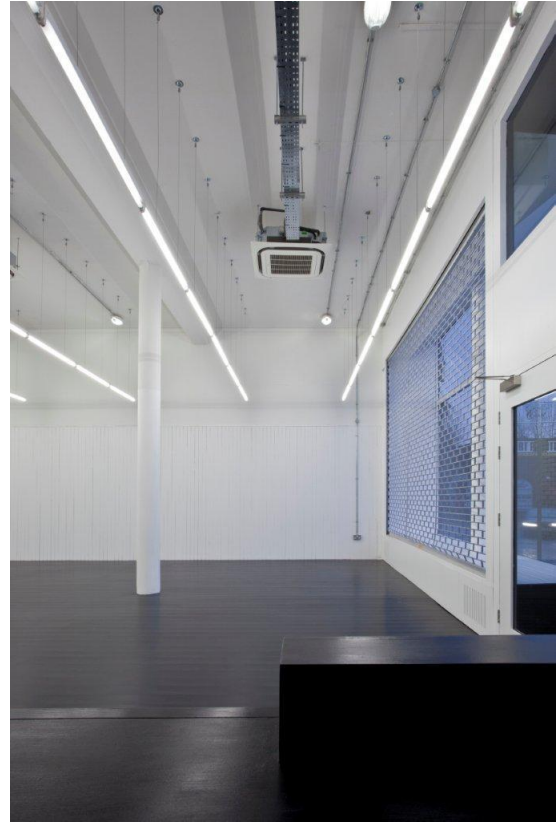
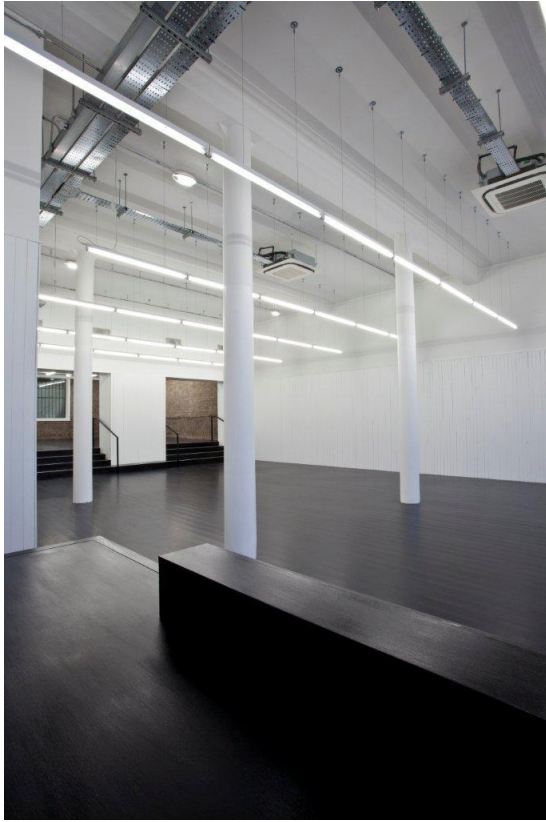
South Block is a 50,000 sq.ft. studio complex in the heart of Glasgow's Merchant City/Tron area. Designed by award winning architects NORD, South Block boasts a ground floor exhibition space, and staffed reception, provides 96 studios for Glasgow's creative community including: 25 offices for creative companies, 7 offices for social enterprises working in the cultural sector, meeting rooms and project spaces available for external hire and a beautiful exhibitions and events space with reception

South Block Gallery & Project Space exists to support both Wasps tenants and the wider creative community in Glasgow by providing prominent and flexible gallery space available for a wide range of internal and external hires.

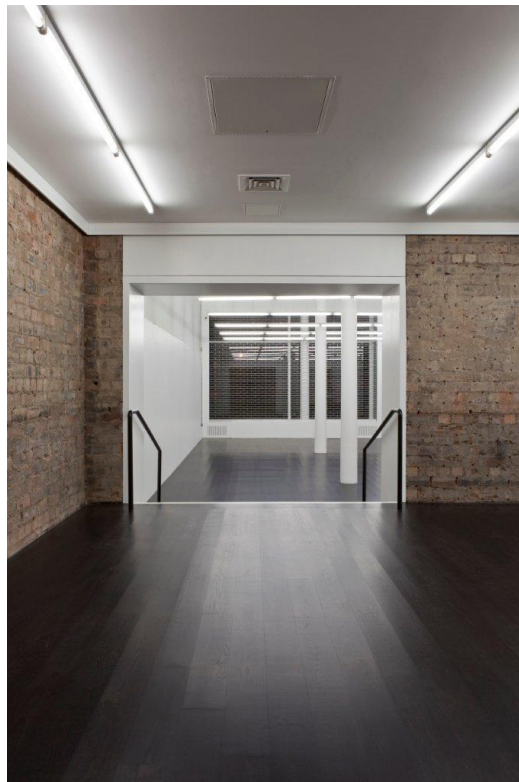
Both spaces are situated on the ground floor of the building and have been designed to host all kinds of commercial and non-commercial practice. They can be used for exhibitions, film screenings, forums, performances, and numerous other events.

South Block Gallery & Project Space aims to host local, national, and international visual arts organisations as well as showcasing high quality visual art and craft.

## Gallery Images



*(Above left and right) Images of front gallery space*



*Project space*

## Gallery Features

South Block Gallery space is a large 'white cube' space with exceptional natural lighting thanks to the two large glass windows located at the main entrance to the building. Additionally, with deep windowsills, these windows provide opportunity to display work. This work can then be viewed by the public 24/7.



*Images of window space – courtesy of Alexander Hoyles*

The space can accommodate both wall mounted and floor-based work. Work may also be suspended from the ceiling, but this is subject to a thorough risk assessment and is dependent on the weight of the work.

The Project Space is available by request in addition to the exhibition space, for conferences and video works only. Please note the Project Space is only accessible via stairs.

### Dimensions

Gallery Space – 11.75m (L) x 5.65m (W) = 66.39 m<sup>2</sup>

Project Space – 7.25m (L) x 5.15m (W) = 37.34 m<sup>2</sup>



### Capacity

Gallery Space – 45 people

Project Space – 25 people

### Wall Features

Gallery walls - White painted plasterboard and white painted wood

Project Space walls – raw brick

### Walls and Doors

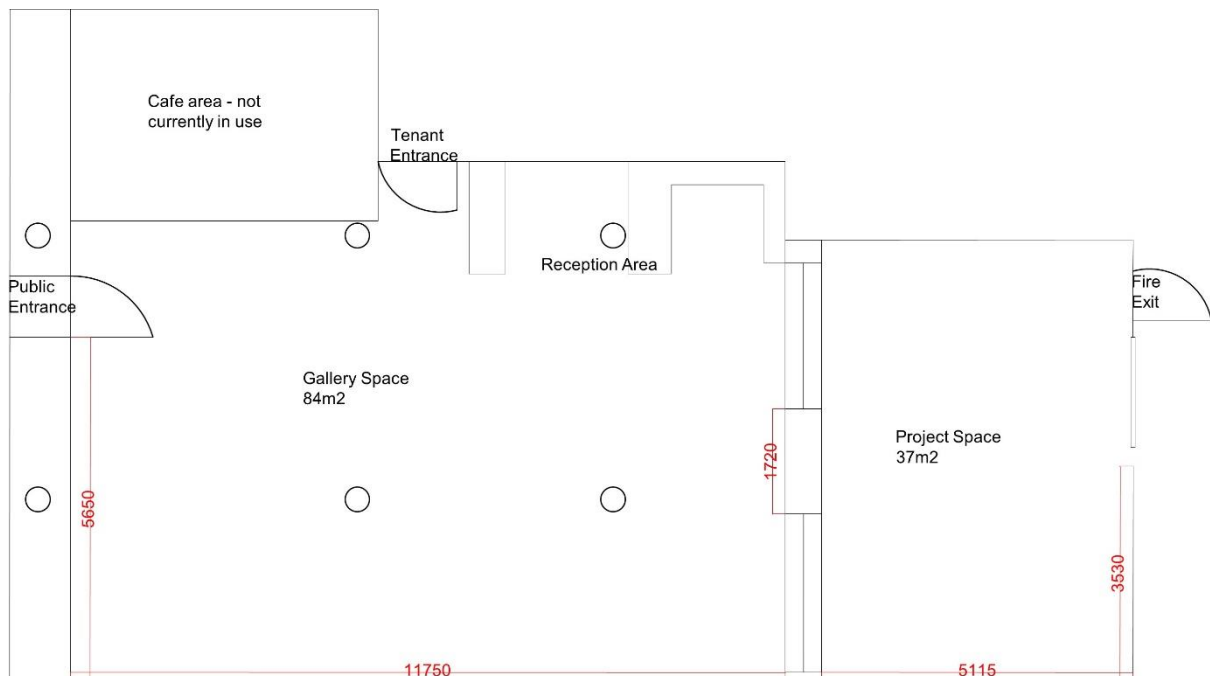
The gallery space can be accessed through the main entrance on the ground floor. The main front of the building allows natural light through the windows to the Gallery Space. There are no windows in the back Project Space.

### Tech

Onsite power – 2x twin sockets in the Gallery, 1 twin socket in the Project Space.

There are 2 portable heaters available for use.

Wi-Fi is available.



### **Opening Hours and Invigilation**

Monday – Friday: 9-5

Closed: Saturday and Sunday

Invigilation is coordinated by the artist. However, should cover need to be arranged for whichever reason, then please detail this information in writing to Wasps in advance of the event. Please note: South Block

Artists can arrange an evening preview for the event or exhibition. The date and time of all openings will be arranged in advance, but openings usually take place 6-8pm on Friday evenings. The date and time of all openings will be arranged in advance and subject to the standard out of hours staffing costs and conditions. Exhibitors are responsible for supplying refreshments for their exhibition or event opening unless otherwise agreed.

## **Installation Information**

### **General Health and Safety Information**

A risk assessment is required prior to any event taking place in the building. This will then be reviewed by Wasps Property Team.

If you already have liability insurance, a copy of this must also be included if your application is successful.

When vacating the building, please ensure that it is secure, e.g., doors closed/locked and windows closed.

Please familiarise yourself with the Fire Action Procedures, to ensure you know how to vacate the building safely in the event of an emergency.

### **Tools and Equipment**

The gallery has access to loanable chairs and tables, but we are unable to loan tools or materials, these must be provided by the artist and covered under the appropriate insurance.

Any electrical products or tools being brought and used on site by the artist must be PAT tested and in date.

The artist is responsible for installing and deinstalling works, which includes returning the gallery to its original condition. Please be mindful of this and ensure you bring the appropriate

equipment needed. For example, filler for any drilling done in walls. If this is not done, you may be at risk of losing your booking deposit.

### **Space Specific Exclusions**

Drilling into the floor is not permitted.

### **Who to contact for support**

Please contact our Arts and Projects team at [projects@waspsstudios.org.uk](mailto:projects@waspsstudios.org.uk) for any questions or queries regarding your booking. You may also contact Wasps via telephone at 0141 553 5890.

## **Booking Information**

Hire costs for South Block Gallery are £250 per week (or a reduced rate of £195 per week for Wasps tenants). Please note that the hires are within regular building opening hours. If you wish to open out with Monday-Friday 9am-5pm then it is subject to a staffing cost of £24 per hour with a minimum call out of 3 hours.

We are happy to consider all manner of projects, exhibitions and events for this space and we welcome projects that are ambitious, innovative, and experimental. The focus of these spaces is to present contemporary visual art and design and crossovers between these art-forms.

All applications will be considered. We ask that you provide us with as much information as possible about your proposed idea (time scale, dates, etc.). Should you have any questions about our application process, please do not hesitate to get in touch. Please email all enquiries to [projects@waspsstudios.org.uk](mailto:projects@waspsstudios.org.uk)

Wasps is able to assist you with limited marketing of your event, as well as selling your work should you choose to. There is a commission fee when selling your work through Wasps. This commission will be discussed and agreed prior to your event.

All successful applicants will be required to sign an artist agreement, that agrees to deliver the proposed project in an outlined timeframe. The artists must state in advance, any talks,

workshops or other events that will be linked to the exhibition. The artist is responsible for installing and deinstalling works, which includes returning the gallery to its original condition.

**[Apply here.](#)**